

From the *Transactions* of the
Bristol and Gloucestershire Archaeological Society

Two Cotswold Houses

by W. St. C. Baddeley
1930, Vol. 52, 304-304

© The Society and the Author(s)

TWO COTSWOLD HOUSES

by ST. CLAIR BADDELEY

PRINKNASH HOUSE

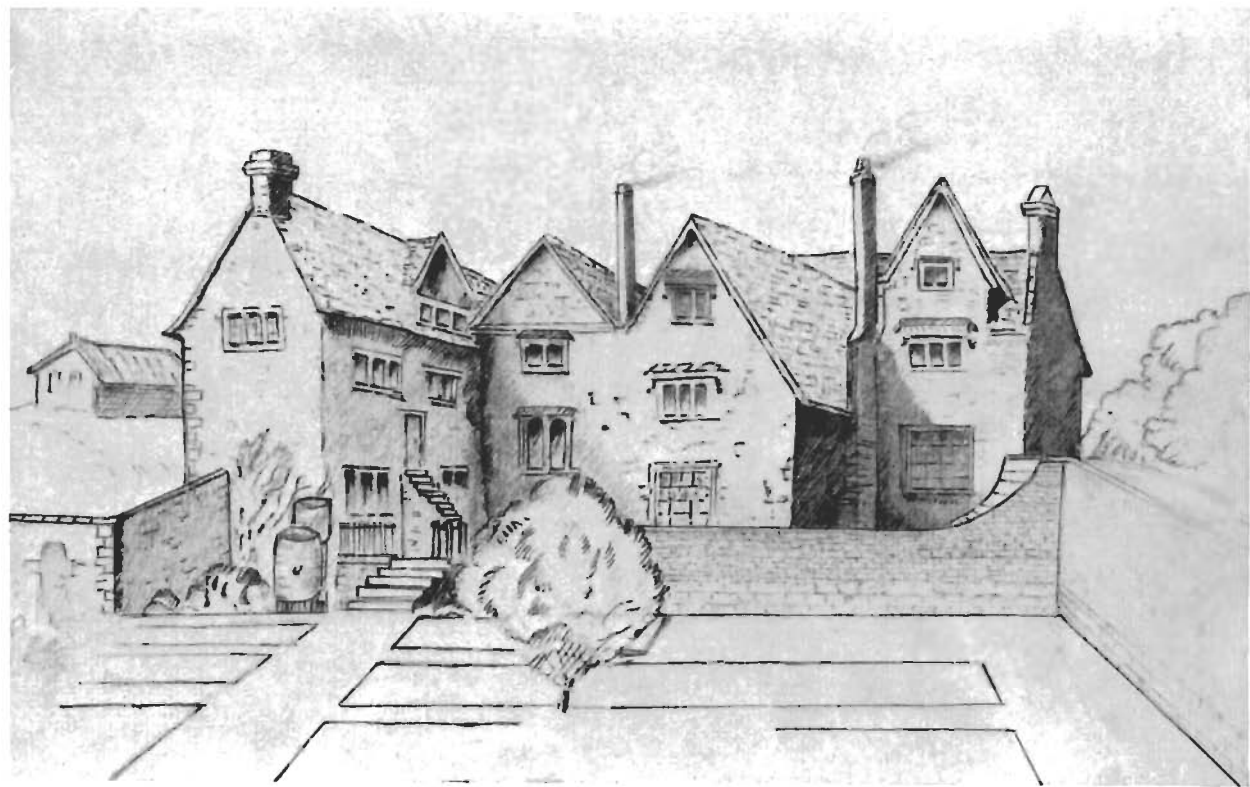
The interesting drawing (plate I) of the southeast (or rear) view of this Tudor mansion, as enlarged by the last abbot of Gloucester, William Malverne (*otherwise* Parker), 1514-38, was made by Samuel Lysons, F.S.A., c. 1790 during the ownership of John Howell (1770-1802). It was found among the papers of the late Mr T. Dyer Edwardes, who lies buried in the chapel (right wing) which he gracefully lengthened by an apsidal termination. The earliest portions of the house, now a priory of the Benedictine Order, point to the 15th century.

SOUTHFIELD HOUSE, PAINSWICK

The drawing (plate II) shows the southeast (or rear) view of Southfield House, in Vicarage street. The front of the house indicates it as of Tudor date and one of the oldest surviving in Painswick. It stands a little west of the better-known Yew Tree House, formerly owned by the Loveday and Roberts families. Reproduced from the original (unfinished) sketch, c. 1830, kindly lent by Mr H. Elderton, of London.



PRINKNASH HOUSE (NOW PRIORY)
From a drawing by Samuel Lysons, F.S.A., c. 1790



SOUTHFIELD HOUSE, PAINSWICK, *c.* 1830